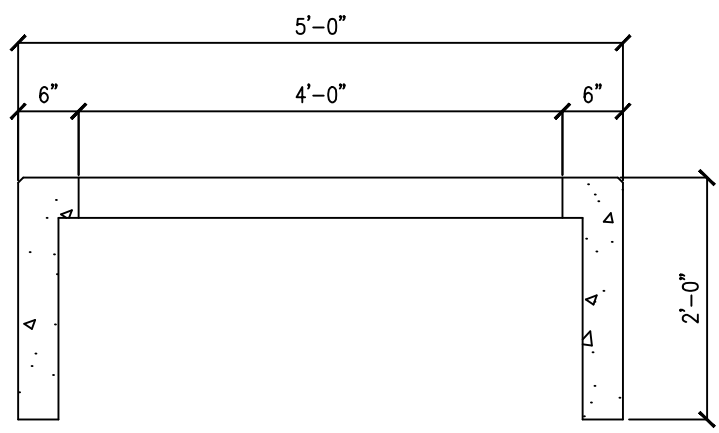
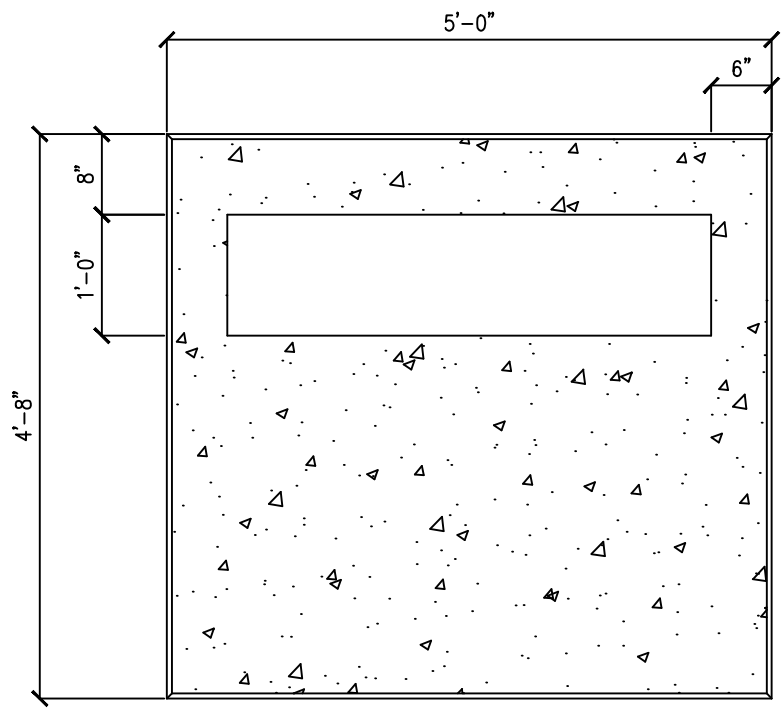




SUM1-D TRANSFORMER PAD



- NOTES:
- 6"x6"-W2.9/W2.9-6GA MESH
 - 3/4" CHAMFERED EDGES
 - WEIGHT: 2,500LBS
 - 6000 PSI CONCRETE MIX DESIGN



ALASKA DOT-QPL APPROVED

Date	
Designed	PAUL DUCLOS 1-11-16
Drawn	
Checked	
Approved	

SUM1-D CONCRETE PAD

PCC
Pre-Cast Concrete Company
348-6730